

IGHT LED ELETRONICS CO

佰鴻工業

<http://www>



Electro-Optical Characteristics (Ta=25°C)

Parameter		Symbol	Conditions	MIN.	TYP.	MAX.	Unit
INPUT	Forward Voltage	V_F	$I_F=20mA$	---	1.2	1.4	V
	Reverse Current	I_R	$V_R=6V$	---	---	10	μA
	Terminal Capacitance	C_t	$V=0, f=1KHz$	---	30	250	pF
	Collector Dark Current	I_{CEO}	$V_{CE}=20V, I_F=0$	---	---	100	nA
	Collector-Emitter Breakdown Voltage	BV_{CEO}					

佰鴻工業股份有限公司

<http://www.brtled.com>



BRIGHT LED ELECTRONICS CORP.

BPC-817S

佰鴻工業股份有限公司

<http://www.brtled.com>

Characteristics Curves

Fig.7 Relative Current Transfer Ratio vs. Ambient Temperature

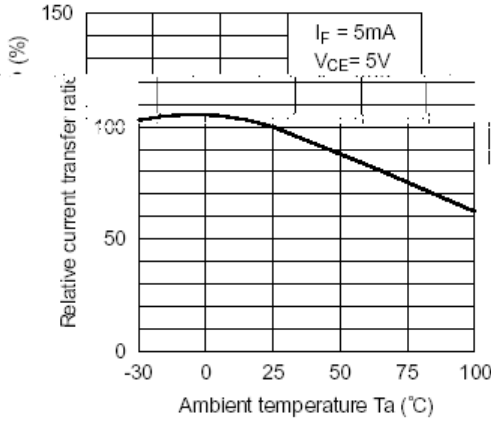


Fig.8 Collector-emitter Saturation Voltage vs. Ambient Temperature

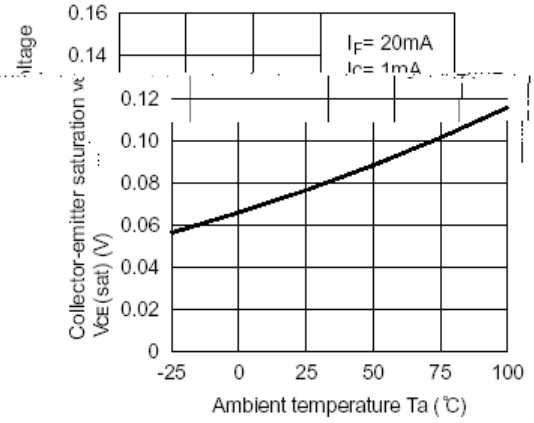


Fig.9 Collector Dark Current vs. Ambient Temperature

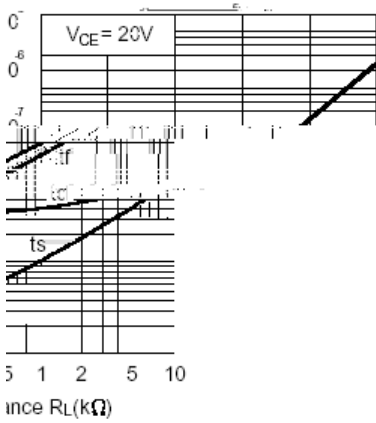


Fig.10 Response Time vs. Load Resistance

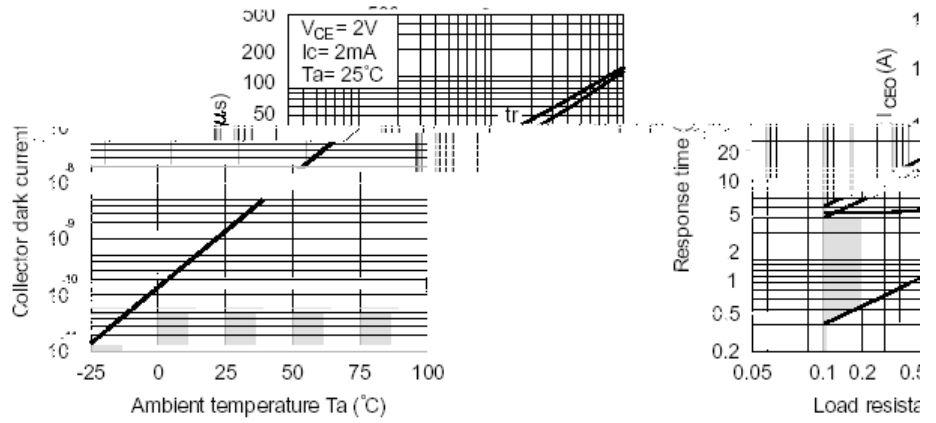
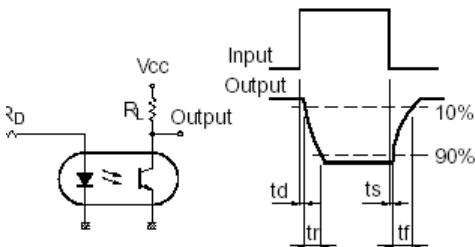
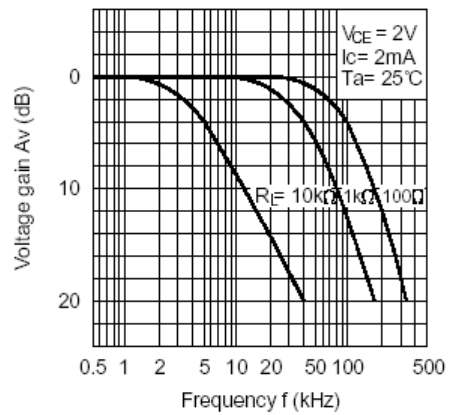
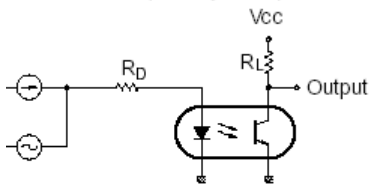


Fig.11 Frequency Response Test Circuit for Determining Frequency Response



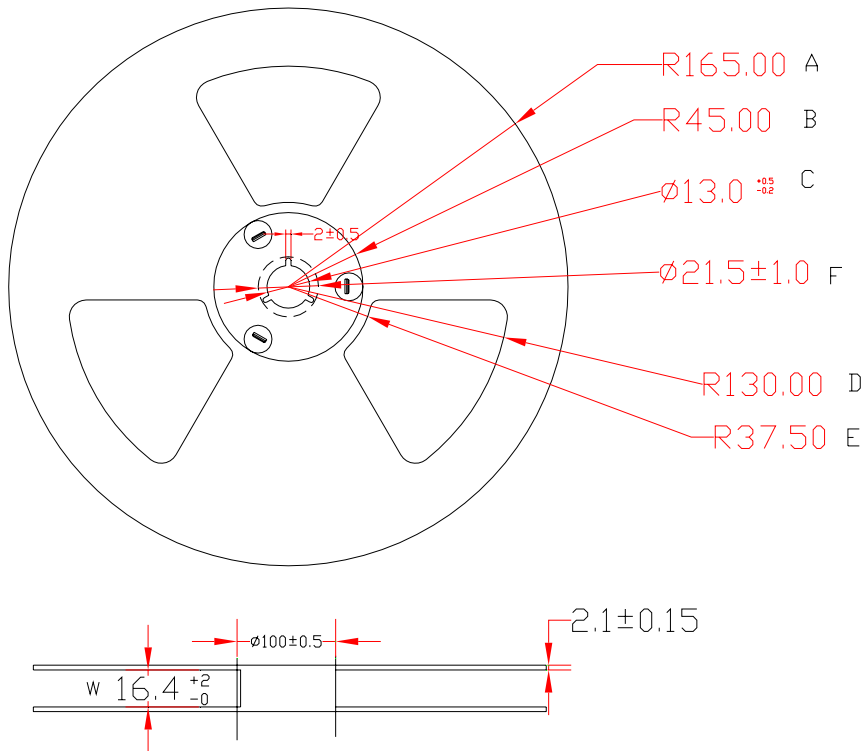
Circuit for Frequency Response



Input f

Test Ci

Packaging Box Dimensions (Units: mm)



● Packaging Tube Dimensions

